



About Us

Founded in 2001 Shining light group of Schools has a long-standing tradition & education of excellence in education

We provide a well-rounded curriculum that prepares students for success both academically and personally



Academic



Personality

Shining Light Group of Schools is a visionary educational institution dedicated to providing high-quality education and nurturing tomorrow's leaders.

Our admissions process is designed to ensure that each student is given the best possible start in their educational journey



Address

Rasonwa Ilese Ijebu



Website

www.shinninglightng.net



Mail

enquiry@shinninglightng.net



**TRANSFORMING LIVES
THROUGH EDUCATION**



Vission

To cultivate future leaders by providing a comprehensive, innovative, and student-centered education

Mission

To provide an enriching educational experience that empowers students to achieve their potential and contribute positively to society

Our Services

- ✓ Early Childhood Education
- ✓ Primary & Secondary Education
- ✓ Computer Based Test/Exam
- ✓ Extracurricular Activities
- ✓ Student Counseling & Support

Who We Are

Our Vision*

To be a leading educational institution that inspires and equips students to make a positive impact in their communities and the world at large.

Our Mission

To provide a supportive and inclusive learning environment that encourages students to explore their passions, develop their talents, and achieve their goals.

Our Values

- Excellence: We strive for excellence in all aspects of our work.
- Integrity: We operate with integrity, honesty, and transparency.
- Respect: We treat others with respect, kindness, and compassion.
- Responsibility: We take responsibility for our actions and their consequences.



ADMISSION

• Nursery & Primary

Requirements

1. ***Age requirement*:** Children typically need to be of a certain age (e.g., 5-6 years old) to enter Primary 1.
2. ***Registration*:** Parents/guardians register their child with the school, providing necessary documents (e.g., birth certificate, state of origin records).
3. ***Assessment*:** The school may conduct assessments or interviews to determine readiness for primary education.

Process

1. ***Application*:** Parents/guardians submit an application form, usually with required documents.
2. ***Review*:** The school reviews applications and determines eligibility.
3. ***Offer*:** Successful applicants receive an offer of admission.
4. ***Acceptance*:** Parents/guardians accept the offer and complete any necessary paperwork.

FACILITIES

✓ **Library and resource center**

✓ **ICT infrastructure and digital resources**

✓ **State-of-the-art classrooms**

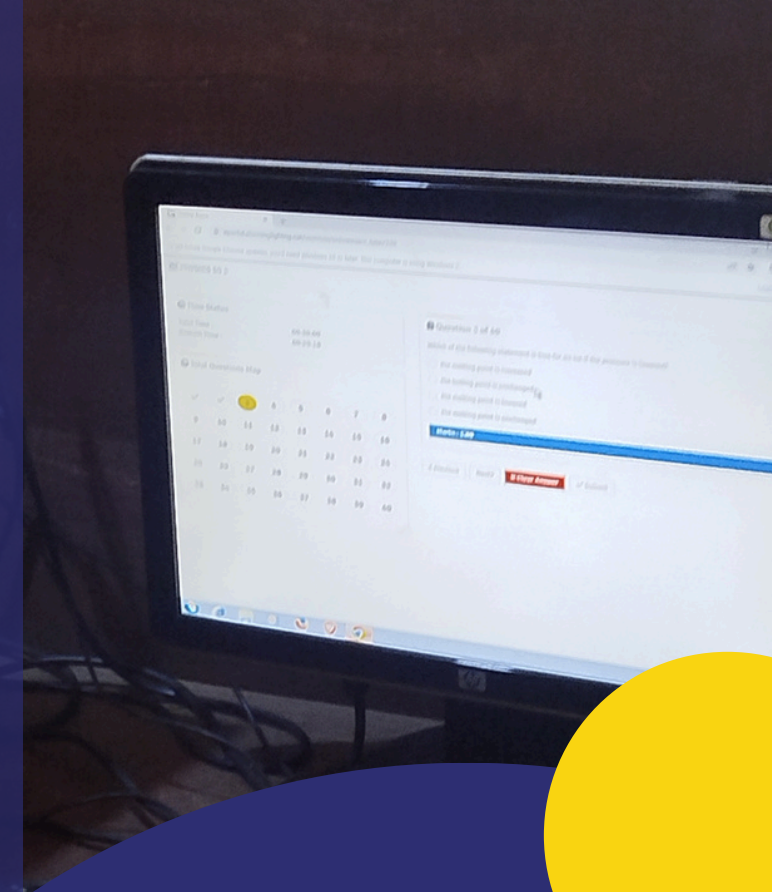
✓ **laboratories**

✓ **Sports facilities**

ACADEMIC PROGRAMS

Comprehensive curriculum that meets the needs of diverse learners

- Experienced and dedicated teachers who are passionate about their subjects
- Opportunities for extracurricular activities and sports





Proprietress Speech

• Nursery & Primary

"Welcome to our vibrant nursery and primary school community! I am thrilled to see our young learners, teachers, and parents come together to celebrate the joy of learning.

At our school, we believe in providing a nurturing environment that fosters curiosity, creativity, and growth. Our dedicated teachers work tirelessly to create engaging lesson plans that cater to the unique needs of each child.

To our parents, I thank you for entrusting us with the care and education of your children. We value your partnership and look forward to working together to ensure your child's happiness and success.

To our students, I encourage you to explore, discover, and learn with wonder. Be brave, be curious, and be kind.

As we embark on this academic year, I am excited to see the amazing things that our pupils will achieve. Let us work together to make this year one of growth, discovery, and joy.

Thank you, and let us shine together!"

Interviews*: The school may conduct interviews as part of the admission process.

5. *Selection*: The school reviews applications and selects candidates for admission.

6. *Offer*: Successful candidates receive an offer of admission.

7. *Acceptance*: Candidates accept the offer and complete any necessary paperwork.

SECONDARY SCHOOL

Application*: Submitting an application form, usually online or in-person.

2. *Registration*: Providing required documents, such as academic records and identification.

3. *Entrance Exams*: The school require entrance exams or assessments.



Our Education Philosophy

Holistic Development*: Fostering intellectual, social, emotional, and physical growth.

2. *Child-Centered Learning*: Prioritizing individual needs, interests, and curiosity.

3. *Inquiry-Based Learning*: Encouraging exploration, critical thinking, and problem-solving.

4. *Creativity and Innovation*: Nurturing imagination, self-expression, and innovative thinking.

5. *Supportive Environment*: Providing a safe, inclusive, and encouraging atmosphere.

This philosophy guides our teaching practices, ensuring students receive a well-rounded education that prepares them for future success.

To our parents, I thank you for entrusting us with the education and care of your children. We value your partnership and look forward to working together to ensure your child's success.

As we move forward, let us strive for excellence, integrity, and respect. Let us create a community that is supportive, inclusive, and inspiring.

Thank you, and let the learning begin!"

DIRECTOR SPEECH

Distinguished guests, esteemed faculty, proud parents, and most importantly, our talented students,

Welcome to Shining Light College! Today, we gather to celebrate the beginning of a new academic year, filled with promise and possibility. As we embark on this journey together, I want to emphasize the importance of hard work, dedication, and passion.

At Shining Light College, we are committed to providing a nurturing environment that fosters academic excellence, creativity, and character development. Our experienced faculty and staff are dedicated to guiding you every step of the way, helping you unlock your potential and achieve your goals.

To our students, I urge you to be curious, to ask questions, and to explore your interests. Take advantage of the opportunities available to you, and don't be afraid to make mistakes – they are an essential part of the learning process.



Junior Secondary School (JSS) Curriculum:*

- *Core Subjects:*
- *English Language*: Focuses on reading, writing, and communication skills
- *Mathematics*: Develops problem-solving and critical thinking skills
- *Basic Science and Technology*: Introduces fundamental concepts in science and technology
- *Social Studies*: Covers history, geography, and cultural studies
- *Elective Subjects:*
- *Nigerian Languages*: Hausa, Yoruba, Igbo
- *Religious and Value Education*: Islamic Studies, Christian Religious Studies
- *Cultural and Creative Arts*: Music, Visual Arts, Drama
- *Pre-Vocational Studies*: Home Economics, Agriculture
- *Business Studies*: Entrepreneurship, commerce
- *French Language*: Optional
- *Arabic Language*: Optional

Curriculum Structure

1. *Lower Basic Education (Primary 1-3)*: Focuses on foundational skills and knowledge
2. *Middle Basic Education (Primary 4-6)*: Builds on previous knowledge and introduces new subject"

The NERDC regularly reviews and updates the curriculum to align with changing societal needs and global educational trends

Senior Secondary School (SS) Curriculum:*

- *Core Subjects:*
- *English Language*
- *General Mathematics*
- *Civic Education*
- *Science Stream:*
- *Agricultural Science*
- *Biology*
- *Chemistry*
- *Physics*
- *Computer Science*
- *Technology Stream:*
- *Auto-Mechanics*
- *Basic Electricity*
- *Building Construction*
- *Foods and Nutrition*
- *Humanities Stream:*
- *Economics*
- *Geography*
- *Government*
- *History*
- *Literature-in-English*
- *Business Stream:*
- *Commerce*
- *Financial Accounting*
- *Insurance*
- *Office Practice*

The Nigerian Educational Research and Development Council (NERDC) is responsible for developing and reviewing the national curriculum

OPEN DAY



Showcasing facilities*: Visitors can tour the school, classrooms, labs, and other facilities.

2. *Meeting staff and students*: Prospective students and parents can interact with teachers, administrators, and current students to get a feel for the institution's culture.

3. *Learning about programs*: Visitors can learn about the various academic programs, extracurricular activities, and support services offered.

4. *Asking questions*: Prospective students and parents can ask questions and get a better understanding of the institution's values, mission, and expectations.

Open Days are usually informative, interactive, and engaging, providing a valuable experience for those considering joining the institution.

SCHOOL PARTY

School parties can be a fun way to celebrate special occasions, build community, and create lasting memories.

laboratories

CARRER DAY



Career Day at Shining Light Group of Schools would be an exciting event where students can explore various career paths and interact with professionals in different fields. Here's what it could entail:

Benefits of Career Day

- ***Exposure to diverse careers*:** Students can learn about careers they may not have considered before, such as STEM fields, arts, or social work.
- ***Real-world insights*:** Professionals can share their experiences, challenges, and advice, giving students a realistic view of different careers.
- ***Networking opportunities*:** Students can connect with professionals in their desired field, potentially leading to mentorship or internship opportunities.

Potential Activities

- ***Career presentations*:** Invite professionals to talk about their careers, sharing their experiences and advice.
- ***Interactive workshops*:** Organize hands-on activities or simulations that give students a taste of different careers.
- ***Career fair*:** Set up a fair where students can explore different career options and talk to professionals in various fields.

Impact on Students

- ***Informed career choices*:** Students can make more informed decisions about their future careers.
- ***Networking opportunities*:** Students can build relationships with professionals in their desired field.
- ***Increased motivation*:** Career Day can inspire students to work towards their goals and pursue their passions ¹.

OUR EXAMINATIONS

Examinations*: The school is approved by the Ogun State Ministry of Education and serves as an examination center for WAEC, NECO, and BECE.



COMMERCIAL REQUIREMENTS



For admission to a Commercial department with a requirement of 60% in Junior School:

Academic Requirements

1. ***Minimum percentage*:** 60% or higher in Junior School Certificate Examination or equivalent.
2. ***Relevant subjects*:** Strong performance in subjects like Business Studies, Economics, Accounting, and Mathematics.

Additional Requirements

1. ***Placement exam*:** The department might require an Placement exam to assess aptitude in commercial subjects.
2. ***Interview*:** Shortlisted candidates might be invited for an interview.

Selection Process

1. ***Merit-based selection*:** Admission will be based on academic performance and other specified criteria.
2. ***Availability of slots*:** Admission is subject to available slots in the Commercial department.

SCIENCE REQUIREMENTS

Academic Requirements

1. ***Minimum percentage*:** 70% or higher in Junior School Certificate Examination or equivalent
2. ***Core subjects*:** Strong performance in Science, Technology, Engineering, and Mathematics (STEM) subjects, such as Mathematics, Physics, Chemistry, and Biology.

Additional Requirements

1. ***Placement exam*:** Candidates may be required to sit for an Placement exam to assess their knowledge and aptitude in Science subjects.
2. ***Interview*:** Shortlisted candidates may be invited for an interview to assess their communication skills, problem-solving abilities, and interest in Science.

Selection Process

1. ***Merit-based selection*:** Candidates will be selected based on their academic performance, entrance exam results (if applicable), and interview performance (if applicable).
2. ***Availability of slots*:** Admission will be subject to availability of slots in the Science Department.

HUMANITIES REQUIREMENTS

For admission to a Humanities department with a requirement of 60% in Junior School:



Academic Requirements

1. ***Minimum percentage*:** 60% or higher in Junior School Certificate Examination or equivalent.
2. ***Relevant subjects*:** Strong performance in subjects like English Language, Literature, History, and Social Studies.

Additional Requirements

1. ***Placement exam*:** The department might require an Placement exam to assess aptitude in Humanities subjects.
2. ***Interview*:** Shortlisted candidates might be invited for an interview.

Selection Process

1. ***Merit-based selection*:** Admission will be based on academic performance and other specified criteria.
2. ***Availability of slots*:** Admission is subject to available slots in the Humanities department.

